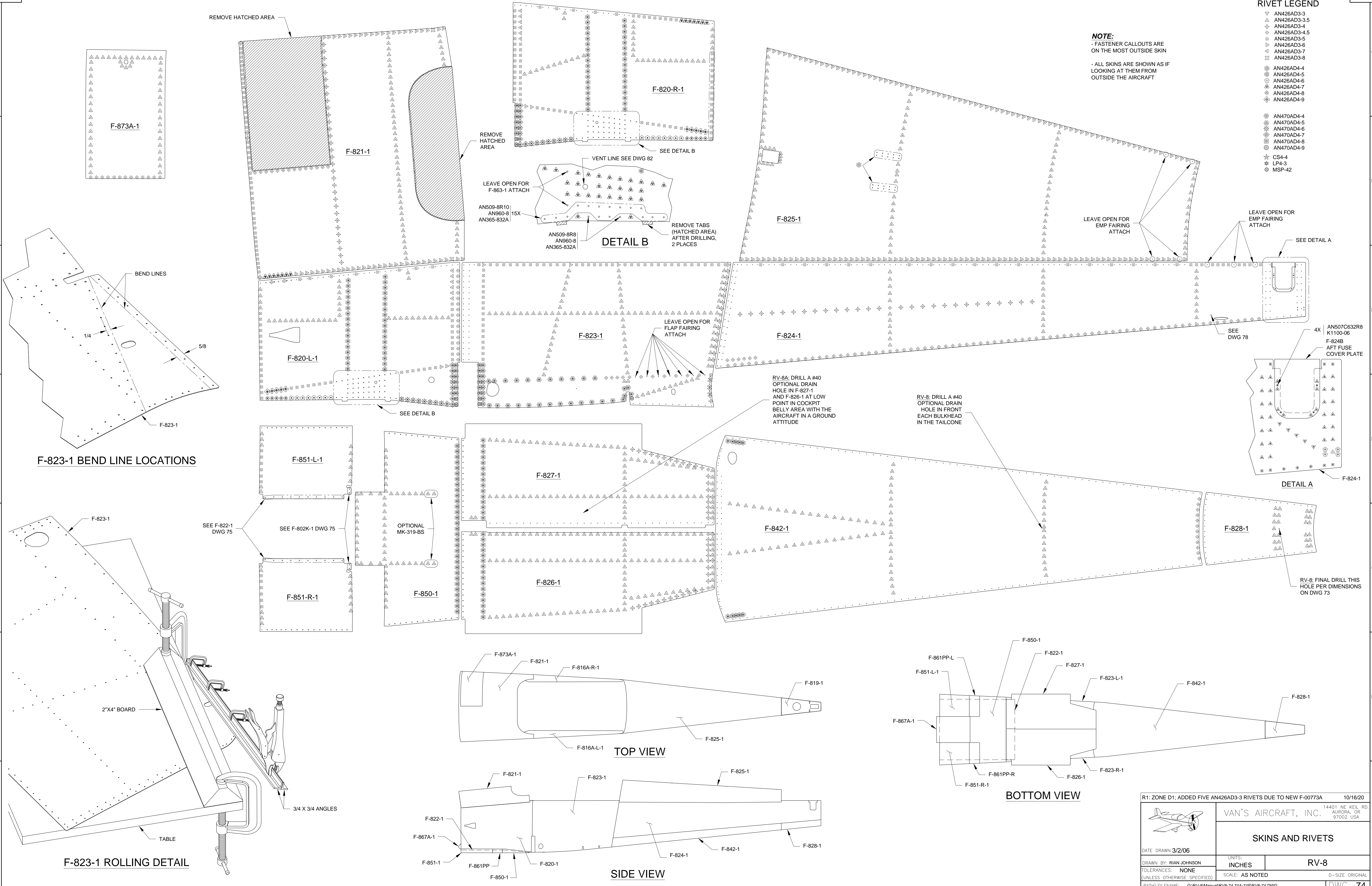


RIVET LEGEND

- ▽ AN426AD3-3
- △ AN426AD3-3.5
- ◇ AN426AD3-4
- ◇ AN426AD3-4.5
- ◇ AN426AD3-5
- ◇ AN426AD3-6
- ◇ AN426AD3-7
- ◇ AN426AD3-8
- ◇ AN426AD4-4
- ◇ AN426AD4-5
- ◇ AN426AD4-6
- ◇ AN426AD4-7
- ◇ AN426AD4-8
- ◇ AN426AD4-9
- ◇ AN470AD4-4
- ◇ AN470AD4-5
- ◇ AN470AD4-6
- ◇ AN470AD4-7
- ◇ AN470AD4-8
- ◇ AN470AD4-9
- ☆ CS4-4
- ★ LP4-3
- MSP-42

NOTE:
 - FASTENER CALLOUTS ARE ON THE MOST OUTSIDE SKIN
 - ALL SKINS ARE SHOWN AS IF LOOKING AT THEM FROM OUTSIDE THE AIRCRAFT



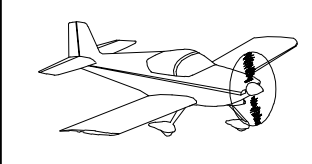
F-823-1 BEND LINE LOCATIONS

F-823-1 ROLLING DETAIL

TOP VIEW

SIDE VIEW

BOTTOM VIEW

R1: ZONE D1; ADDED FIVE AN426AD3-3 RIVETS DUE TO NEW F-00773A		10/16/20
 VAN'S AIRCRAFT, INC. 14401 NE KEL RD. AURORA, OR 97002 USA		
SKINS AND RIVETS		
DATE DRAWN: 3/2/06	UNITS: INCHES	RV-8
DRAWN BY: RIAN JOHNSON	TOLERANCES: NONE (UNLESS OTHERWISE SPECIFIED)	SCALE: AS NOTED
PATH: FILENAME: Q:\RV-8Manual\RV8-74 74A-74R\RV8-74.DWG		D-SIZE ORIGINAL
		DWG 74