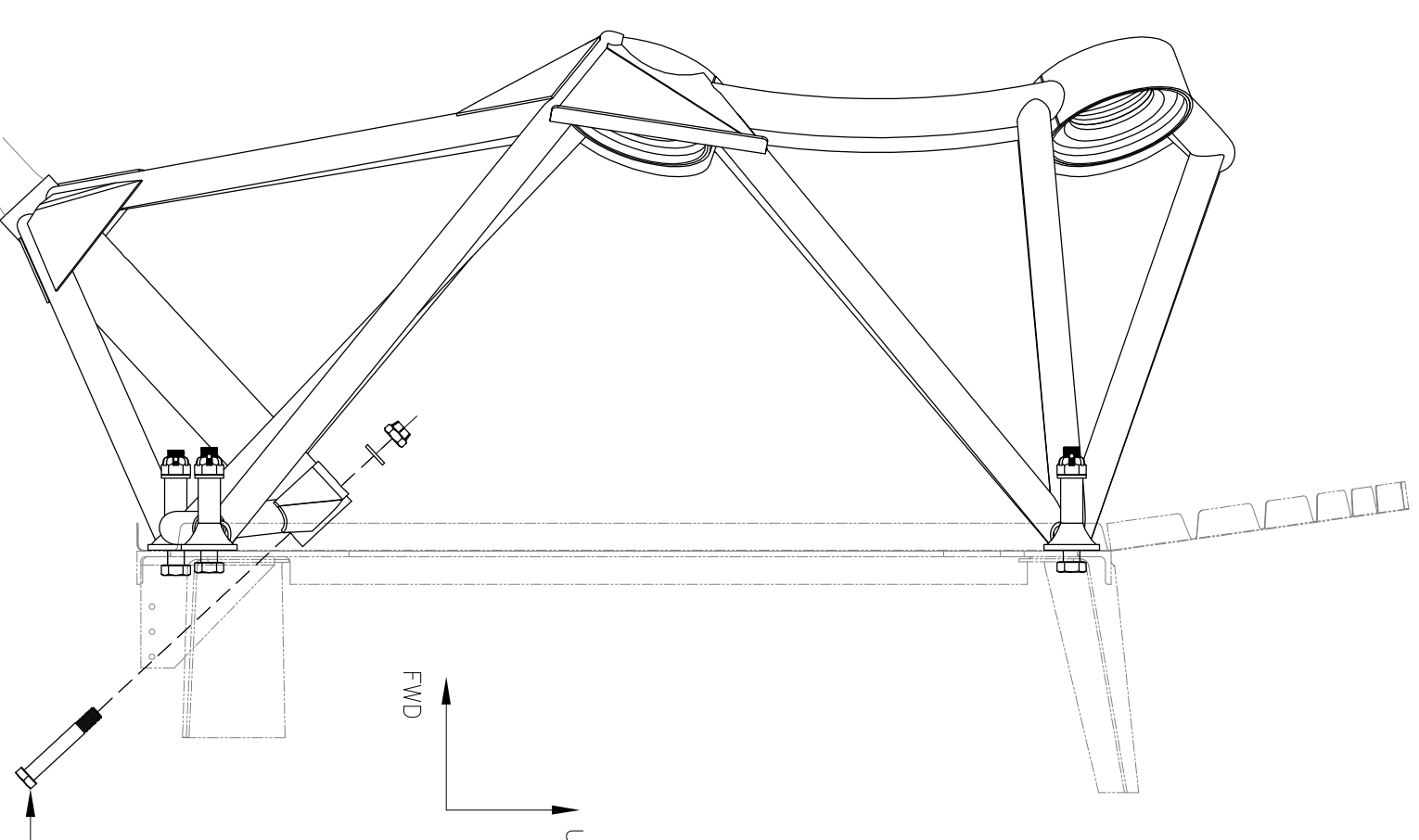
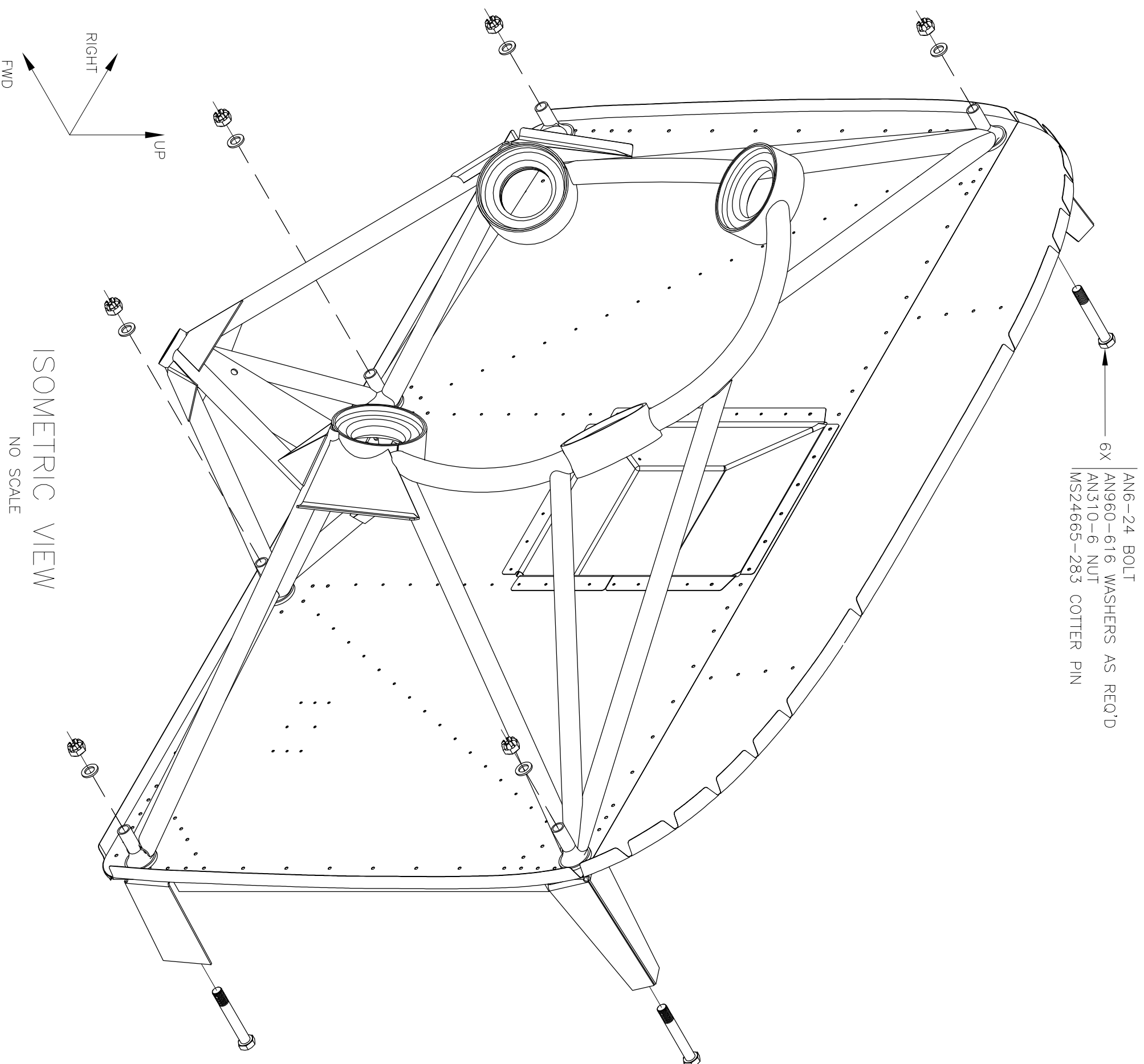
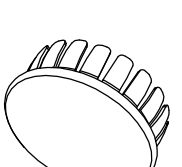


TYPE I DYNAFOCAL ENGINE MOUNT

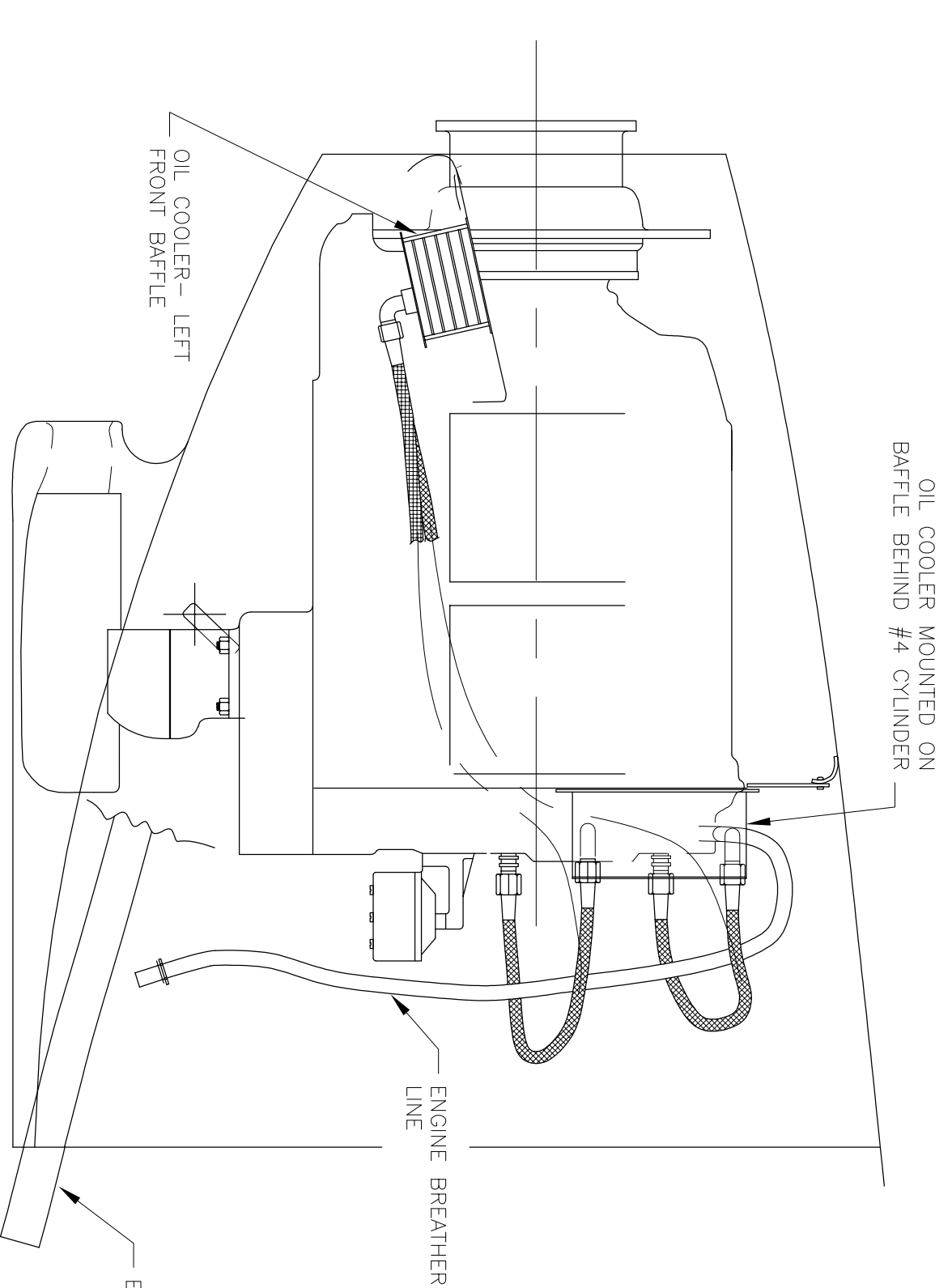
1/4 SCALE
SOME FIREWALL DETAILS OMITTED FOR CLARITY
(TYPE II DYNAFOCAL AND CONICAL MOUNTS SIMILAR)



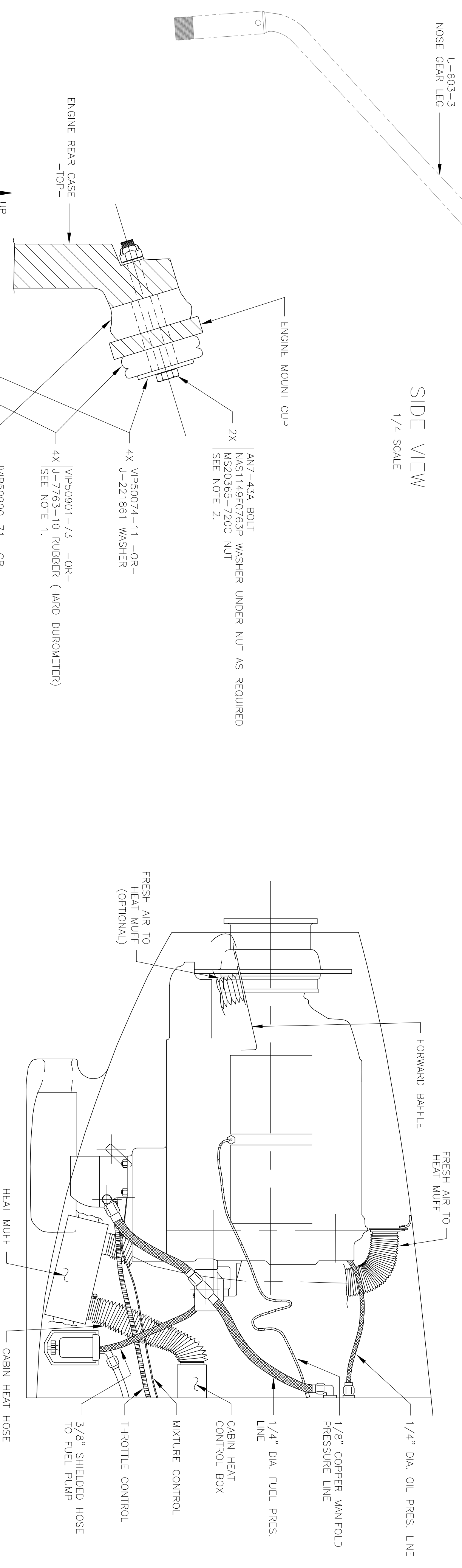
NOTE 1:
PASS BOLT THROUGH #3/4 HOLE IN FIREWALL BULKHEAD (SEE DRAWING 19).
AFTER ATTACHING NOSEGEAR LEG, INSERT P/N: "FF 3/4 FIREWALL PLUG" STAINLESS
STEEL FIREWALL PLUG INTO NOSE GEAR ACCESS HOLE. SEAL WITH PROSEAL.



FF 3/4 FIREWALL PLUG
USE TO PLUG NOSE GEAR ATTACH ACCESS HOLE
FOR RV-7A9A ONLY. FULL SCALE



OIL COOLER PLACEMENT
MANY VARIATIONS POSSIBLE. NO SCALE

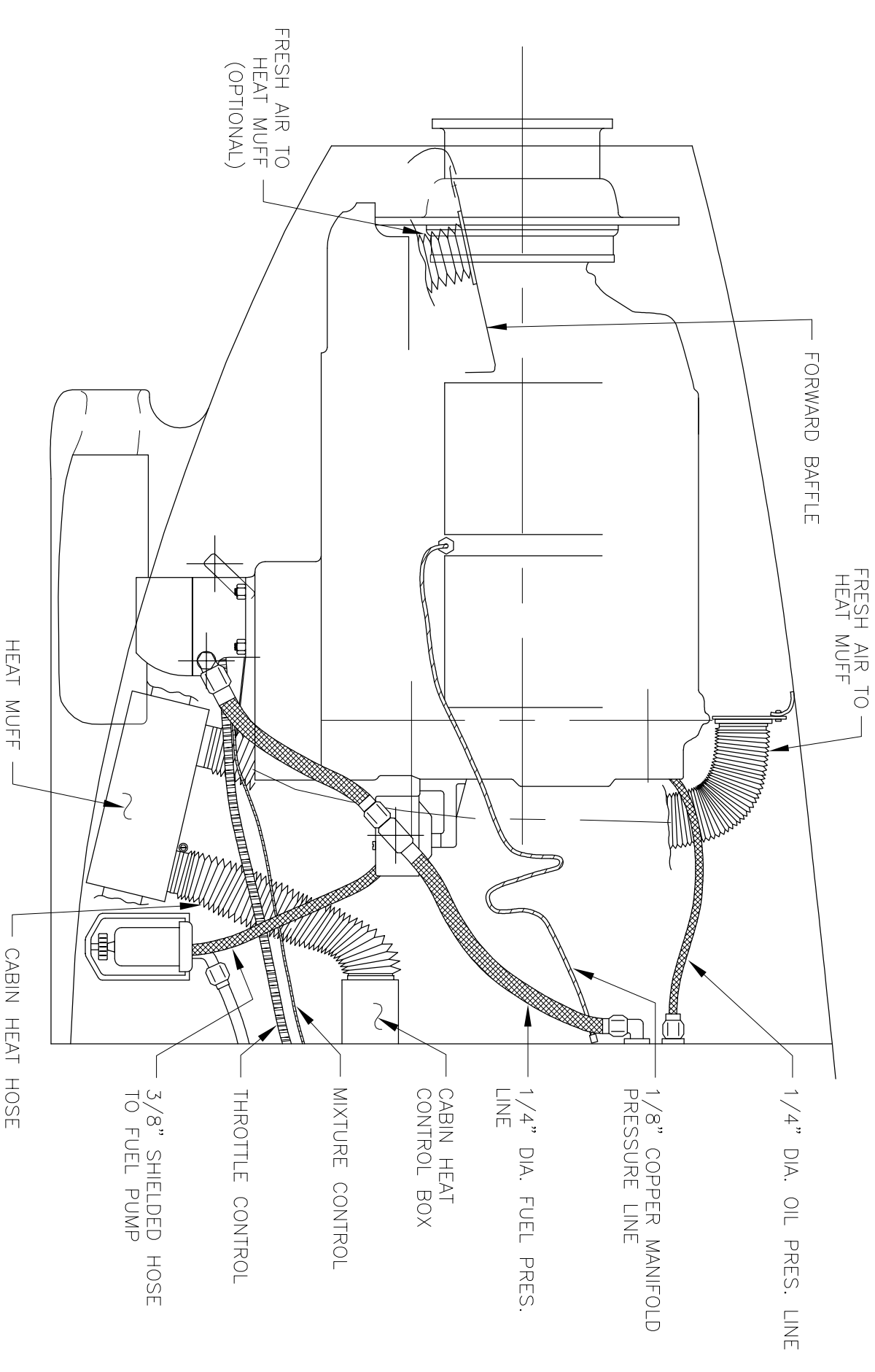


SIDE VIEW
1/4 SCALE

- NOTES:
1. WEIGHT OF ENGINE (POSITIVE "G") PUTS ALL J-7763-10 RUBBER MOUNTS IN COMPRESSION.
 2. BOLTS ARE TIGHTENED TO BOTTOM-OUT OF RUBBER MOUNTS. WASHERS ARE TORQUED TO STANDARD VALUES.
 3. WASHER PROVIDES CLEARANCE FOR RUBBER MOUNT TO FIT OVER STEP IN ENGINE CASE.

TYPICAL INSTALLATION OF
DYNAFOCAL MOUNTING KIT
SIDE VIEW, NO SCALE

TYPICAL ENGINE INSTALLATION
MANY VARIATIONS POSSIBLE. NO SCALE



<p>R31 ADDED NOTE 1 AND VIEW "FF 3/4 FIREWALL PLUG".</p> <p>DRAWN BY MICHAEL SCHWARTZ</p> <p>TOLERANCES: NONE</p> <p>SCALE: AS NOTED</p> <p>(UNLESS OTHERWISE SPECIFIED)</p>		<p>DATE: 12/12/00</p> <p>UNITS: INCHES</p> <p>LEGACY NOSE GEAR: RV-7A, 9A</p> <p>D-SIZE ORIGINAL</p>
<p>VAN'S AIRCRAFT, INC.</p> <p>14401 NE 45th Ave. Alvord, OR 97002 USA</p>		<p>ENGINE/NOSE GEAR MOUNT</p> <p>RV-6A & RV-7A, 9A</p> <p>DWG 46A REV3</p>