

# VAN'S AIRCRAFT, INC.

14401 NE Keil Road, Aurora, Oregon 97002 • USA

PHONE 503-678-6545 • FAX 503-678-6560

INTERNET [www.vansaircraft.com](http://www.vansaircraft.com) • E-MAIL [info@vansaircraft.com](mailto:info@vansaircraft.com)

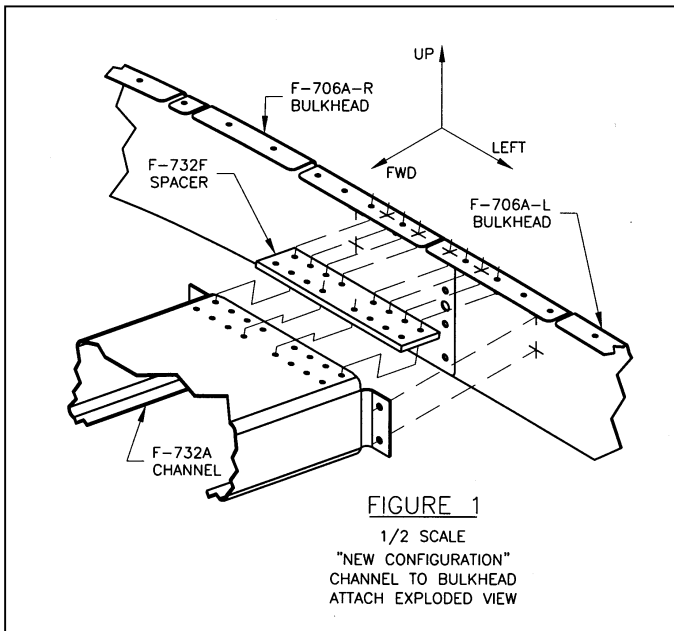


FIGURE 1  
1/2 SCALE  
"NEW CONFIGURATION"  
CHANNEL TO BULKHEAD  
ATTACH EXPLODED VIEW

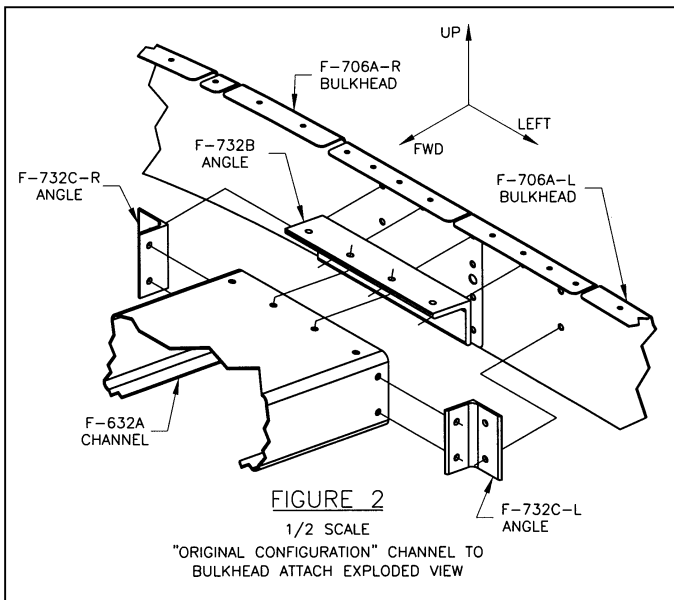


FIGURE 2  
1/2 SCALE  
"ORIGINAL CONFIGURATION" CHANNEL TO  
BULKHEAD ATTACH EXPLODED VIEW

**SERVICE BULLETIN NUMBER:** 05-1-1

**DATE ISSUED:** January 21, 2005

**APPLICATION:** RV-7/7A, RV-9/9A Tip-up Canopy Fuselage Kits.

**BACKGROUND AND INTRODUCTION:** This Bulletin shows changes to the configuration of RV-7 and RV-9 Tip-Up Canopy Fuselage Kits shipped prior to December 19, 2004. The new configuration is shown in Figure 1. The original configuration is shown in Figure 2. Also see RV-7/9 Drawing 40. The "new configuration" provides a more direct load path from the F-732A Channel to the F-774 Aft Fuselage Top Skin. Additionally, the new configuration is simpler to install and slightly lighter.

**REQUIRED ACTION:** There are two possible sets of parts and instructions necessary to comply with the Service Bulletin, depending on how much of the fuselage is already completed. Use the drawings and description below to decide which parts and instructions you need. These will be supplied free of charge upon request.

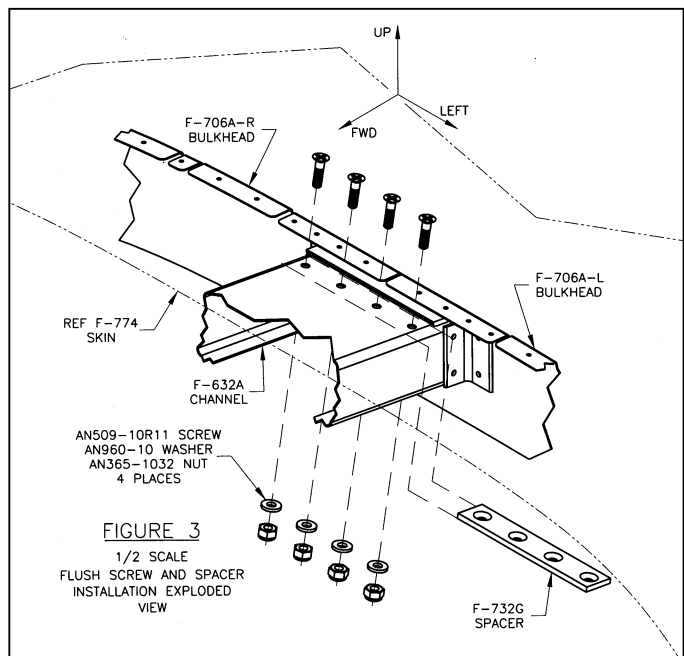


FIGURE 3  
1/2 SCALE  
FLUSH SCREW AND SPACER  
INSTALLATION EXPLODED  
VIEW

When completed, all Tip-Up RV-7 and RV-9 fuselages must be as shown in Figure 1 or as shown in Figure 3.

"Original configuration" Tip-Up RV-7 and RV-9 fuselages which have not yet had F-732C-L/R attach holes drilled through the F-706A-L/R Bulkhead (See Figure 2) may easily be assembled using "new configuration" parts. If your fuselage falls within this criteria, contact Van's Aircraft and request the **"7/9 TIP-UP NEW CONFIG"** kit.

"Original Configuration" Tip-Up RV-7 and RV-9 fuselages which are completed past the point of drilling F-732C-L/R attach holes through the F-706A-L/R Bulkhead must have screws and spacer installed as shown in Figure 3. If your fuselage falls within this criteria, contact Van's Aircraft and request the **"7/9 TIP-UP SPACER KIT"**.