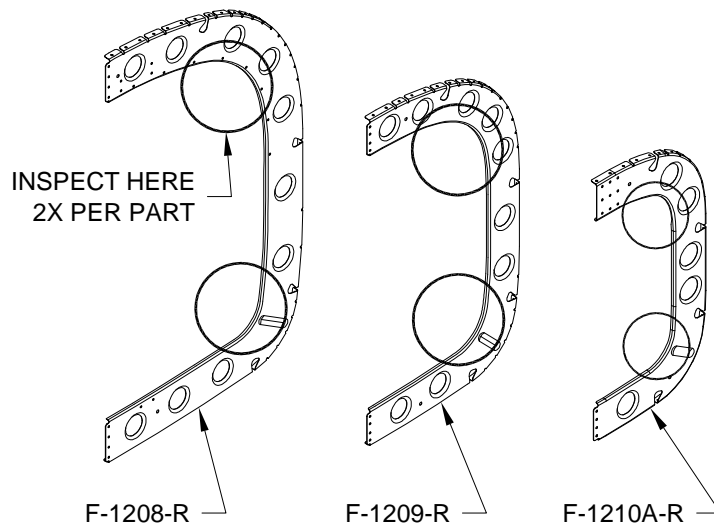




This service letter details inspection of RV-12 aft fuselage bulkheads for minor cracking. Only RV-12 Emp/Cone Kits shipped prior to December 4, 2008 are affected by this Service Letter.

Step 1: Inspect the circled regions for cracks in the 3/16 in. interior flanges of the parts depicted in Figure 1. Also inspect the left-handed parts; F-1208-L, F-1209-L, F-1210A-L (not shown).

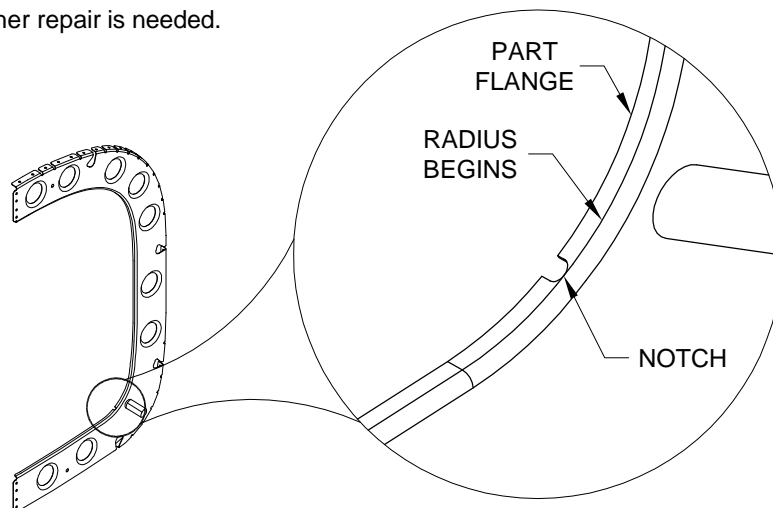


**FIGURE 1: INSPECTION AREA**  
(ALSO APPLIES TO F-1208-L, F-1209-L, F-1210A-L)

If cracks are found that do not extend into the radius of the flange they should be removed using the following method.

Step 2: Notch the flange just enough to remove the crack. This may be accomplished using a round file or a notching tool if available. See Figure 2.

No further repair is needed.



**FIGURE 2: CRACK REMOVAL**

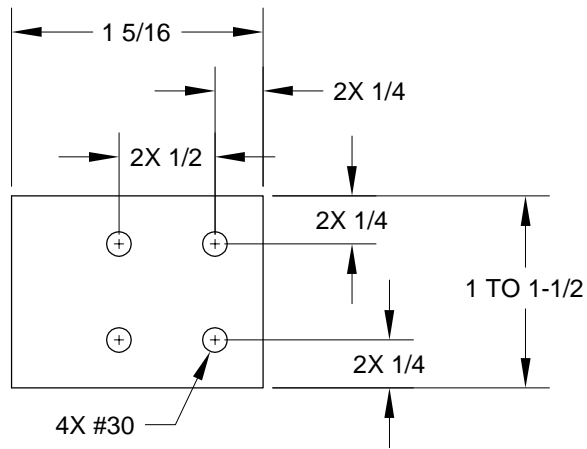


A part with a crack that extends into the radius of the flange should be repaired using the following method.

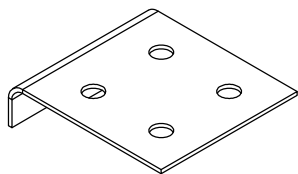
**Step 3:** Remove the crack as described in Step 2.

Fabricate a patch from the full size template shown in Figure 3.

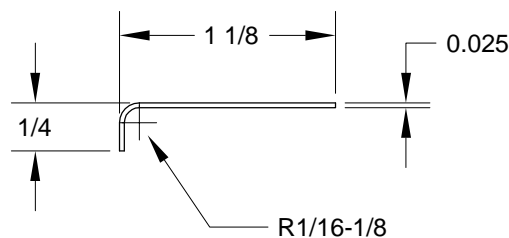
Increase part width to 1-1/2 in. if crack is adjacent to stiffening bead.



**FULL SIZE TEMPLATE  
(FLAT PATTERN)**



**COMPLETED PATCH**

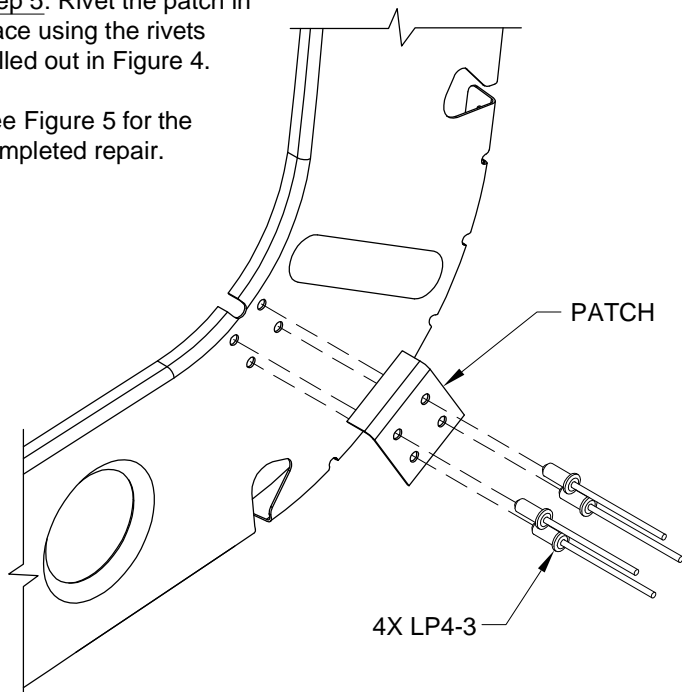


**FIGURE 3: FABRICATE PATCH**

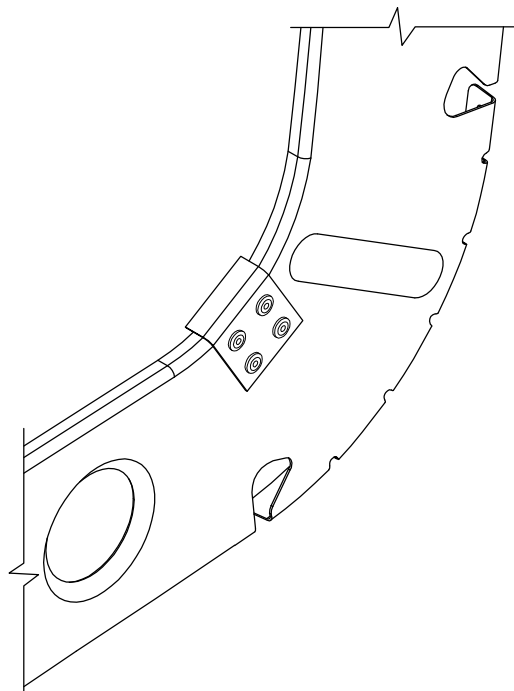
**Step 4:** Center the patch over the notch. Space the flange of the patch so that it is close to but not contacting the part flange. Match-Drill the patch to the web of the part using the patch as a guide. Remove the patch and deburr the web of the part. Cleco the patch in place.

**Step 5:** Rivet the patch in place using the rivets called out in Figure 4.

See Figure 5 for the completed repair.



**FIGURE 4: INSTALL PATCH**



**FIGURE 5: COMPLETED REPAIR**