

TOTAL PERFORMANCE VAN'S AIRCRAFT

14401 Keil Road NE, Aurora, Oregon, USA 97002
PHONE 503-678-6545 • FAX 503-678-6560 • www.vansaircraft.com • info@vansaircraft.com
Service Letters and Bulletins: www.vansaircraft.com/public/service.htm

NOTIFICATION 14-06-30

Date Released: June 30th, 2014

Date Effective: June 30th, 2014

Subject: VA-215 Oil Return Hose Re-Route

Affected Models: RV-12

Required Action: Inspect VA-213 Oil Supply Hose and VA-215 Oil Return Hose for signs of chaffing on the firewall assembly. Re-Route oil return hose.

Time of Compliance: At or before the next annual condition inspection

Supersedes Notice: None

Labor Required / SLSA Warranty Allowance: N/A

Level of Certification: ELSA - Owner, LSA Repairman Inspection
SLSA - LSA Repairman Maintenance, A&P

Synopsis:

Routing of the oil supply return hoses has been improved to decrease the possibility of interference with the F-1257 Rudder Pedal Support Channel or other parts of the firewall. See Figure 1.

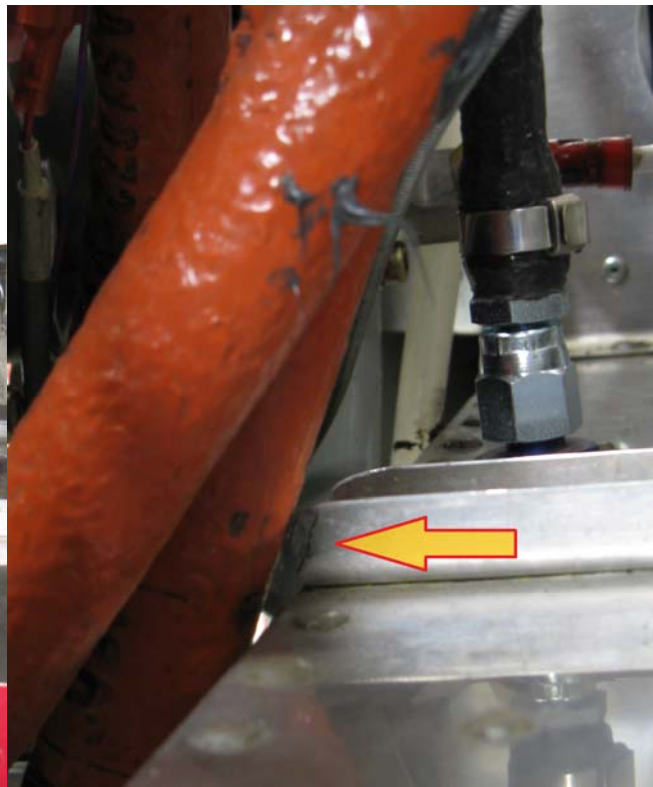
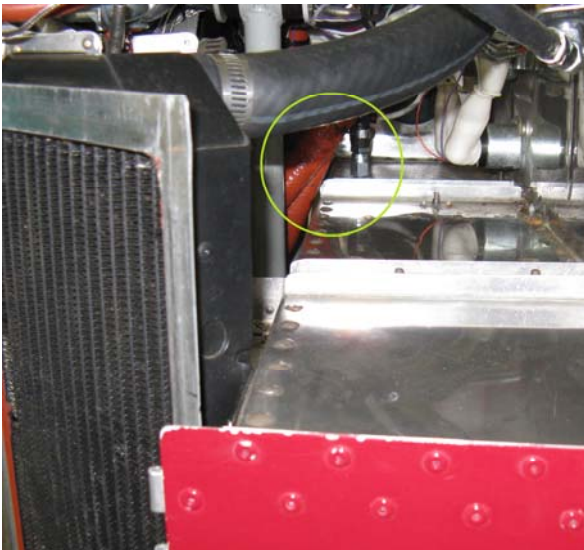


FIGURE 1: POSSIBLE OIL LINE INTERFERENCE

TOTAL PERFORMANCE VAN'S AIRCRAFT

14401 Keil Road NE, Aurora, Oregon, USA 97002

PHONE 503-678-6545 • FAX 503-678-6560 • www.vansaircraft.com • info@vansaircraft.com

Service Letters and Bulletins: www.vansaircraft.com/public/service.htm

Method of Compliance:

Step 1: Remove tie-wraps that may be holding the VA-213 Oil Supply Hose and VA-215 Oil Return Hose together.

NOTE: Disconnecting the VA-213 Oil Supply Hose should not be necessary to comply with this Notification. Doing so will require an oil purge. See the Rotax manual for further information.

Step 2: Inspect the VA-213 Oil Supply Hose and VA-215 Oil Return Hose for interference with the firewall structure (F-1257 Rudder Pedal Channel or corner edge of the shelf) and possible damage. See Figure 1. If only the fire sleeve has been damaged by the channel the hose assembly may be returned to service by sealing the hole with high temp RTV. If the channel has worn into the oil hose the hose assembly must be replaced.

Step 3: Disconnect the VA-215 Oil Return Hose from the oil tank. Do not disconnect the VA-213 Oil Supply Hose. See Figure 2.

Step 4: Re-Route the VA-215 Oil Return Hose between the WD-1220 Engine Mount and WD-1221 Engine Mount Standoff.

Step 5: Re-Connect the VA-215 Oil Return Hose to the oil tank.



**FIGURE 2: TOP VIEW
CORRECT ROUTING**

TOTAL PERFORMANCE VAN'S AIRCRAFT

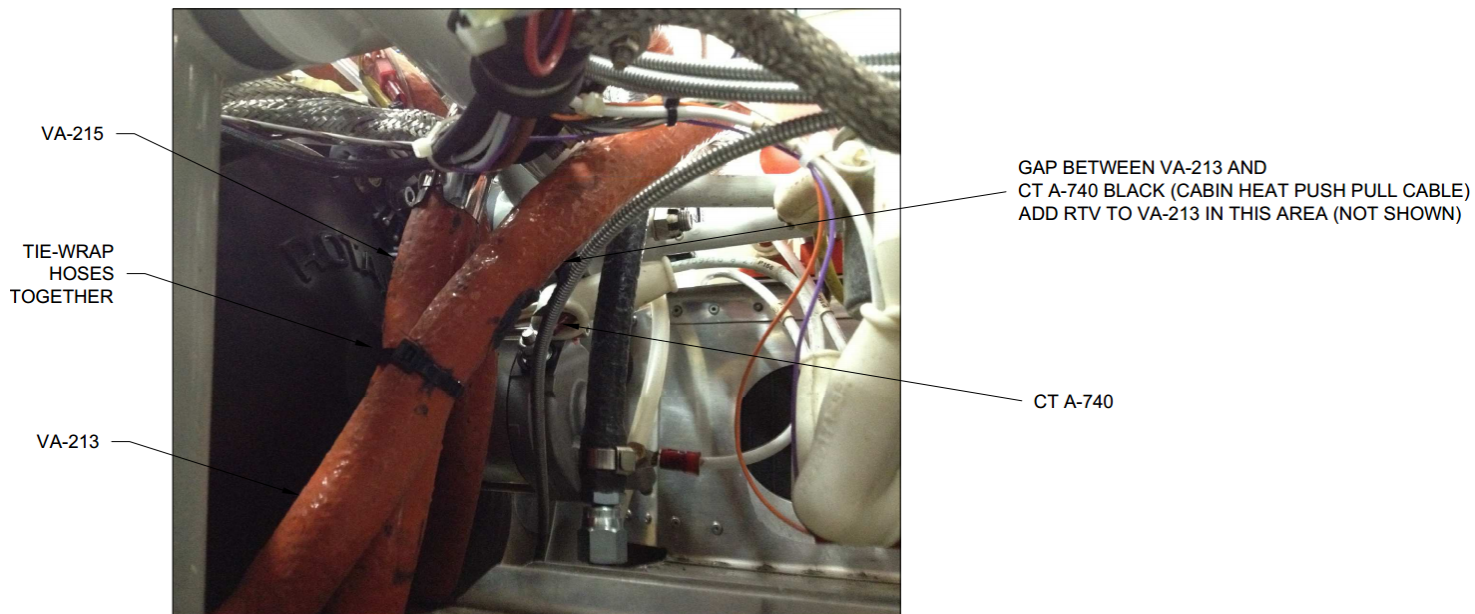
14401 Keil Road NE, Aurora, Oregon, USA 97002

PHONE 503-678-6545 • FAX 503-678-6560 • www.vansaircraft.com • info@vansaircraft.com

Service Letters and Bulletins: www.vansaircraft.com/public/service.htm

Step 6: Tie-Wrap the VA-213 Oil Supply Hose and VA-215 Oil Return Hose together as shown in Figure 3.

Step 7: Add RTV between the VA-213 Oil Supply Hose and the cabin heat push pull cable. See Figure 3.



**FIGURE 3: BOTTOM VIEW
CORRECT ROUTING**

TOTAL PERFORMANCE VAN'S AIRCRAFT

14401 Keil Road NE, Aurora, Oregon, USA 97002

PHONE 503-678-6545 • FAX 503-678-6560 • www.vansaircraft.com • info@vansaircraft.com

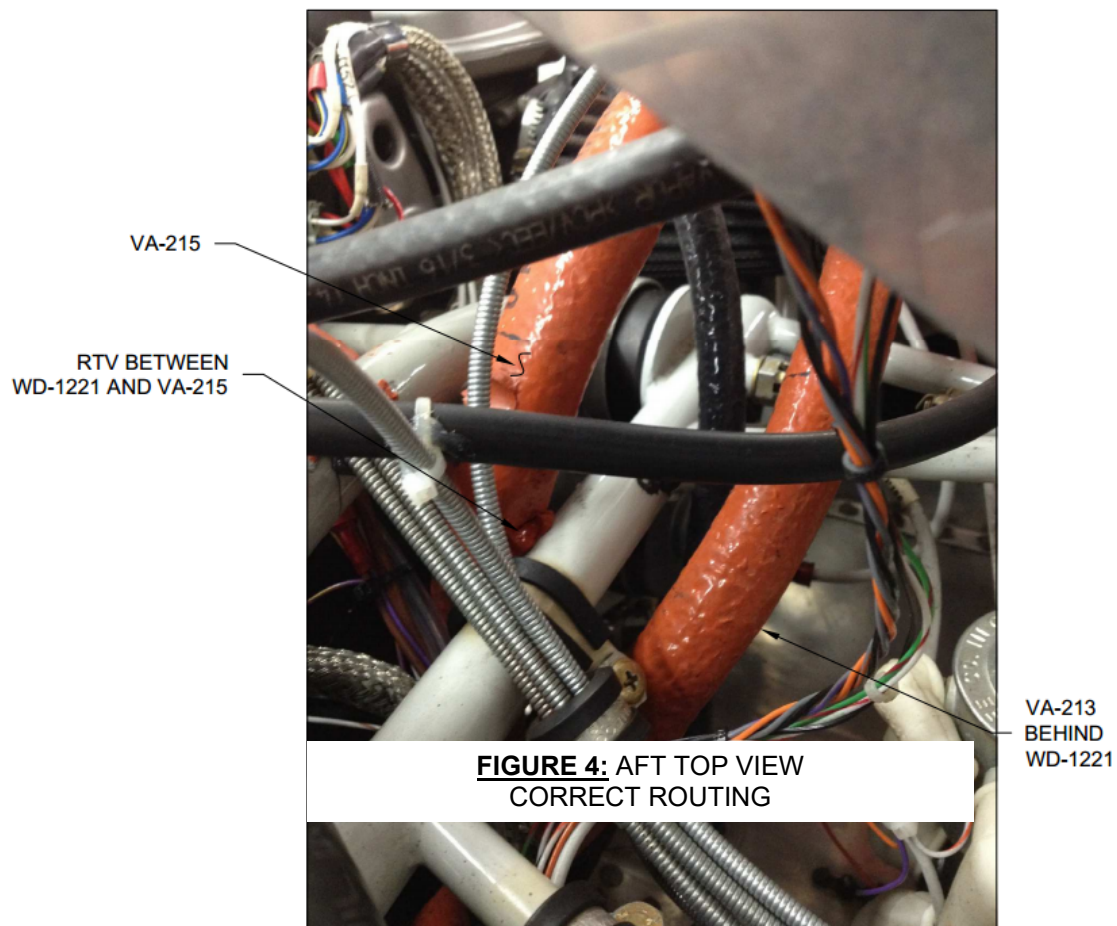
Service Letters and Bulletins: www.vansaircraft.com/public/service.htm

Step 8: Add RTV between the VA-215 Oil Return Hose and the WD-1221 Engine Mount Standoff. See Figure 4.

Step 9: Make a logbook entry showing compliance with this notification.

Step 10: Place a copy of this notification in the back of the maintenance manual for your aircraft.

Note the addition of this notification to the bottom of the Maintenance Manual table of contents.



Service Bulletin Routing

	Action	Initial	Date
General Manager	Notified as of:		
Engineering	Perform Risk Assessment (ASTM F2295)		
	Action Required? Yes / No		
General Manager	Notified of Action required		
	Notification to: Production		
	Notification to: Shipping		
	Notification to: _____		
Design Engineer	Completed SB Documentation		
	Notified: Production/Shipping/ _____		
	Copy to DL Staging		
Chief Engineer	Checked SB Documentation		
General Manager	Notified of Status		
General Manager	Notification to Tech Help, Orders, Proto, VAF monitor, Engineering		
IT	Posted to Web		
General Manager	Forwarded to Builder Notification		
Builder Notification	EMAIL Completed		
	Snail Mail Completed		
Shipping	Shipments Completed		
General Manager (Or Chief Eng for GM)	SB Completed and Filed		