

Step 1: Move the Choke Cable handle all the way forward to the off position as shown in Figure 1.

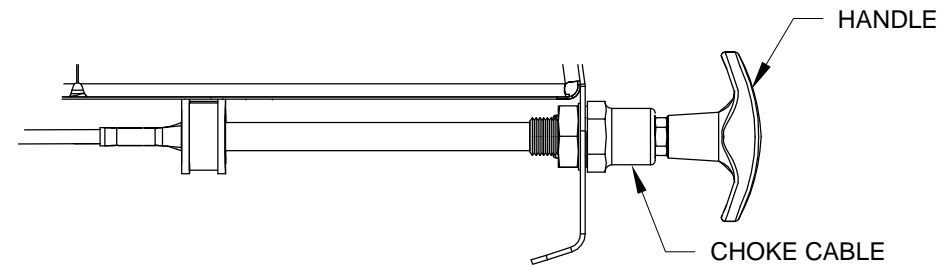


FIGURE 1:
CHOKE HANDLE POSITION

Step 2: Slide the CT-00100 Wire Swivel & Set Screws (for the remainder of this section called Wire Swivel) into the choke lever as shown in Figure 2. Loosen the outer set screw.

Step 3: Insert the Choke Cable (the longer of the two cables) lead into the cable mount tube, then through the hole in the Wire Swivel as shown in Figure 2, Detail A-A. Guide the conduit of the choke cable into the cable mount tube as shown in Figure 2.

Step 4: With the choke lever resting against the lower stop. Secure the choke cable lead by tightening the Wire Swivel set screw as shown in Figure 2.

Step 5: Trim the Choke Cable lead to the dimension given in Figure 2, Detail A-A.

Step 6: Actuate the Choke Cable handle through the full range of motion. Ensure that the full range of motion (lower stop-to-upper stop) of the choke lever is achieved. Check for any interference throughout the full range of motion of the choke lever, Wire Swivel, and choke cable lead.

Step 7: Seal the cable penetration grommet (see Page 50-04, Figure 1) and the firewall wire penetration grommet (see Page 45-04, Figure 1) with Firewall Sealant. Firewall Sealant not provided in kit. Firewall Sealant is available from Van's Aircraft.

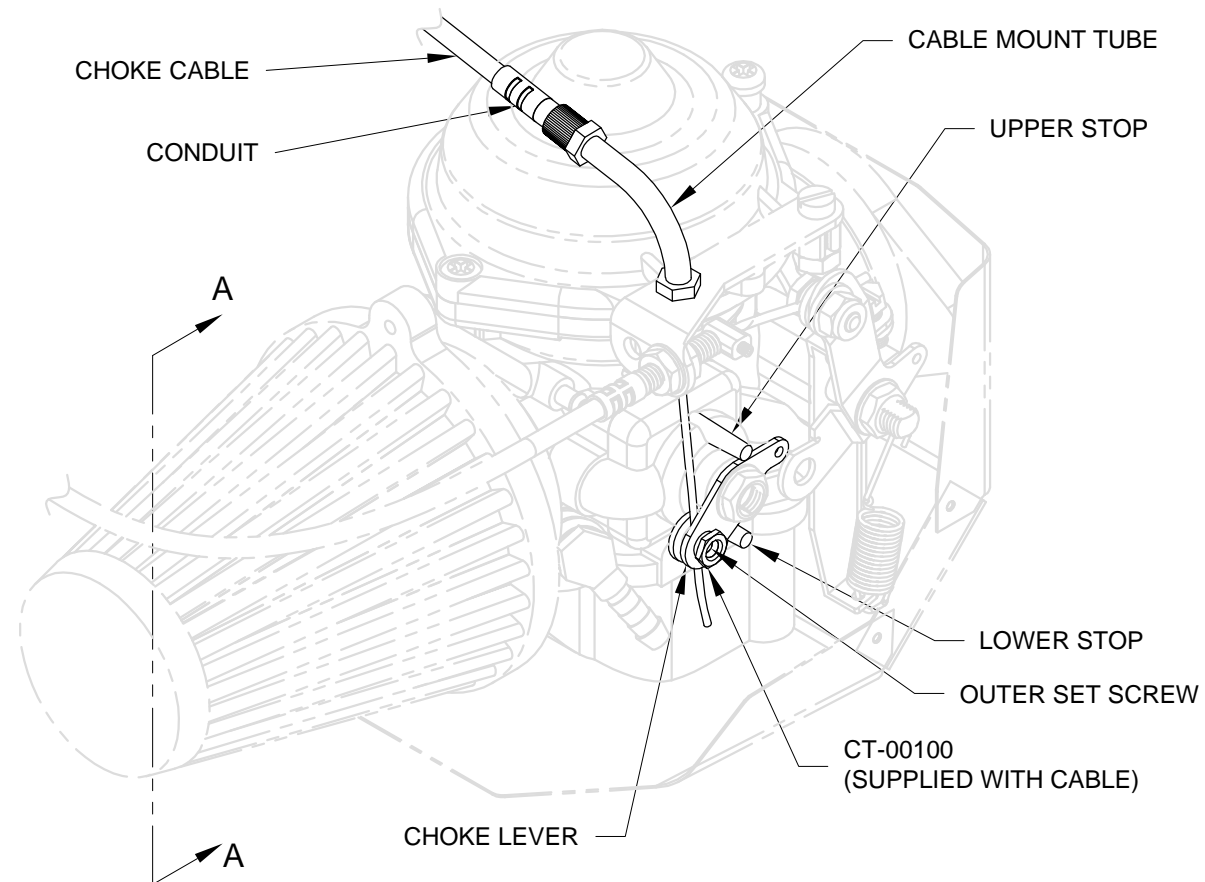
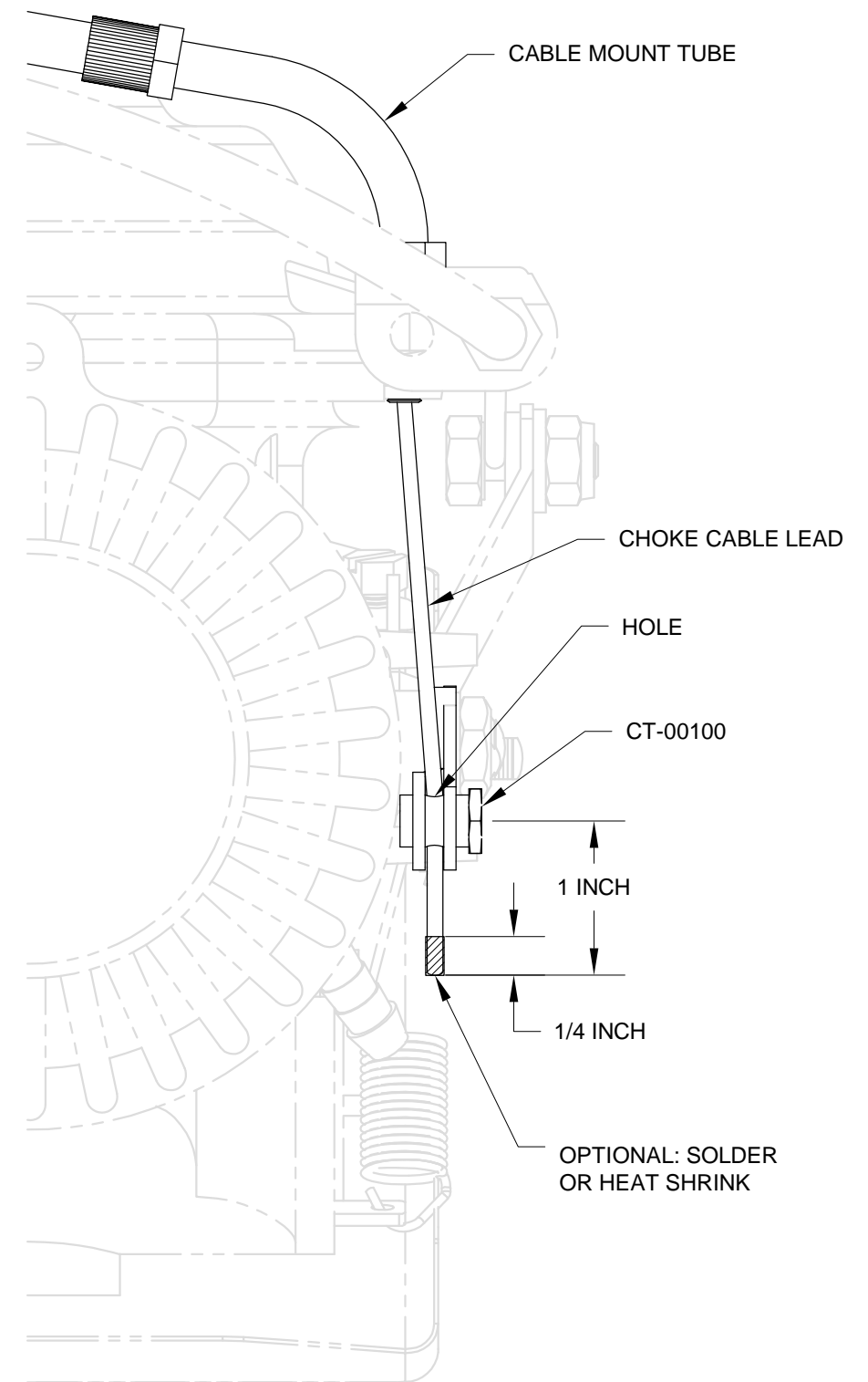


FIGURE 2:
CHOKE CABLE LEAD-TO-CARB CONNECTION



DETAIL A-A