



Step 1: Apply sealant to all mating surfaces of the T-1207 Fwd Baffle and T-1208 Baffle then rivet them to the T-1201 Main Tank Skin and rivet them together. Ensure that the two inboard fuel passages of the baffle are free of sealant and that the outboard passage is filled as indicated in Figure 1. Do not apply sealant to the corners of the fwd baffle. Fill the two tooling holes in both of the baffles with sealant as indicated in Figure 2. When finished the only way for fuel, below the top flange of the baffles, to transfer to either side should be through the four critical fuel passages indicated in Figure 1.

Step 2: Rivet the T-1207 Fwd Baffle to the T-1202 Fwd Bulkhead per call-outs in Figure 1.

Step 3: Adjust the joggled outer edges of the T-1203 Bulkhead top flange to be parallel to the remainder of the flange.

Step 4: Rivet the T-1203 Aft Tank Bulkhead to the T-1201 Main Tank Skin per the call-outs in Figure 1.

Step 5: Apply tank sealant to the inside bottom corners as shown in Figure 1.

Step 6: Rivet the T-1214 Attach Angle to the T-1203 Aft Tank Bulkhead per the call-outs in Figure 2.

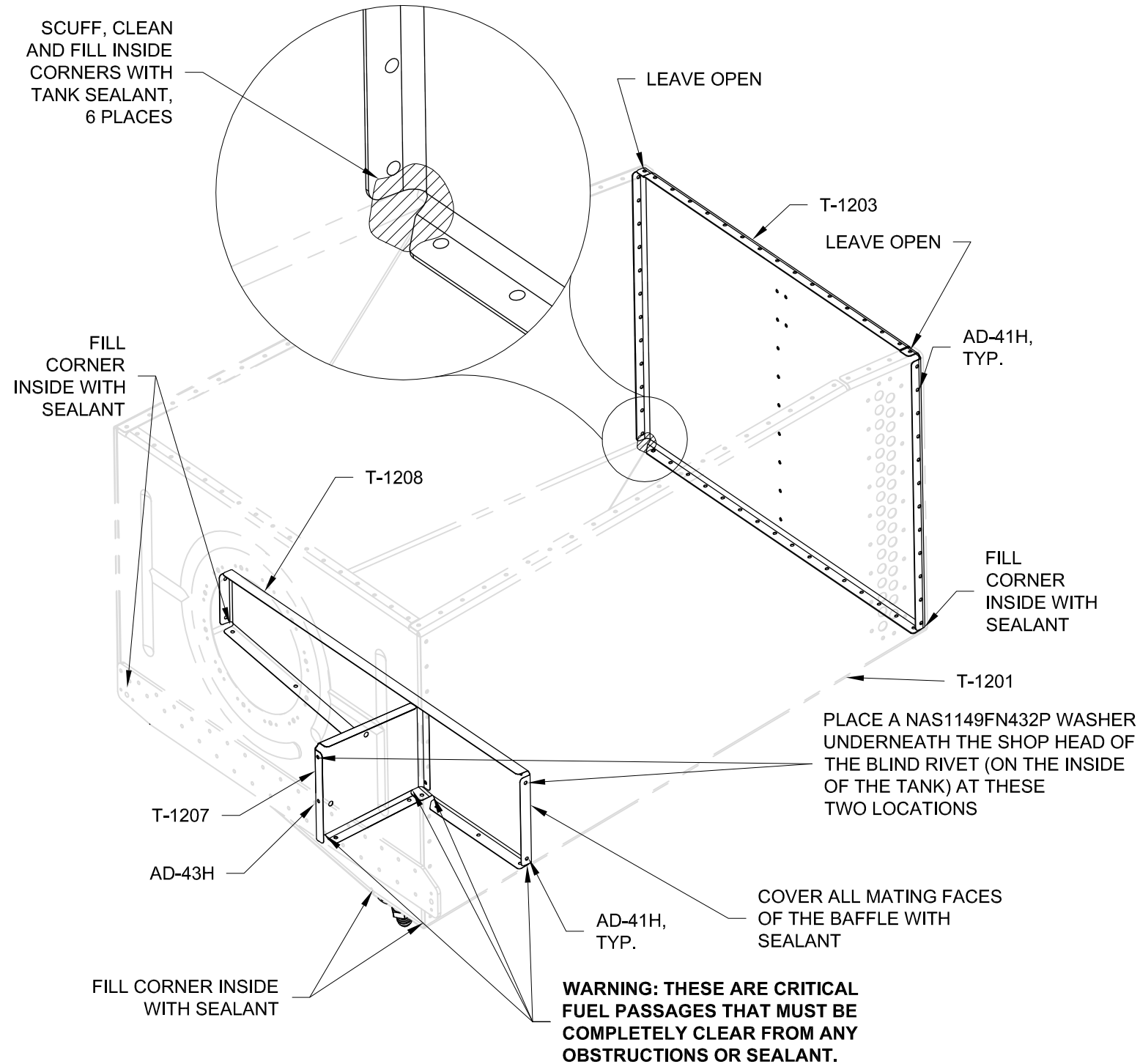


FIGURE 1: BAFFLE AND AFT BULKHEAD

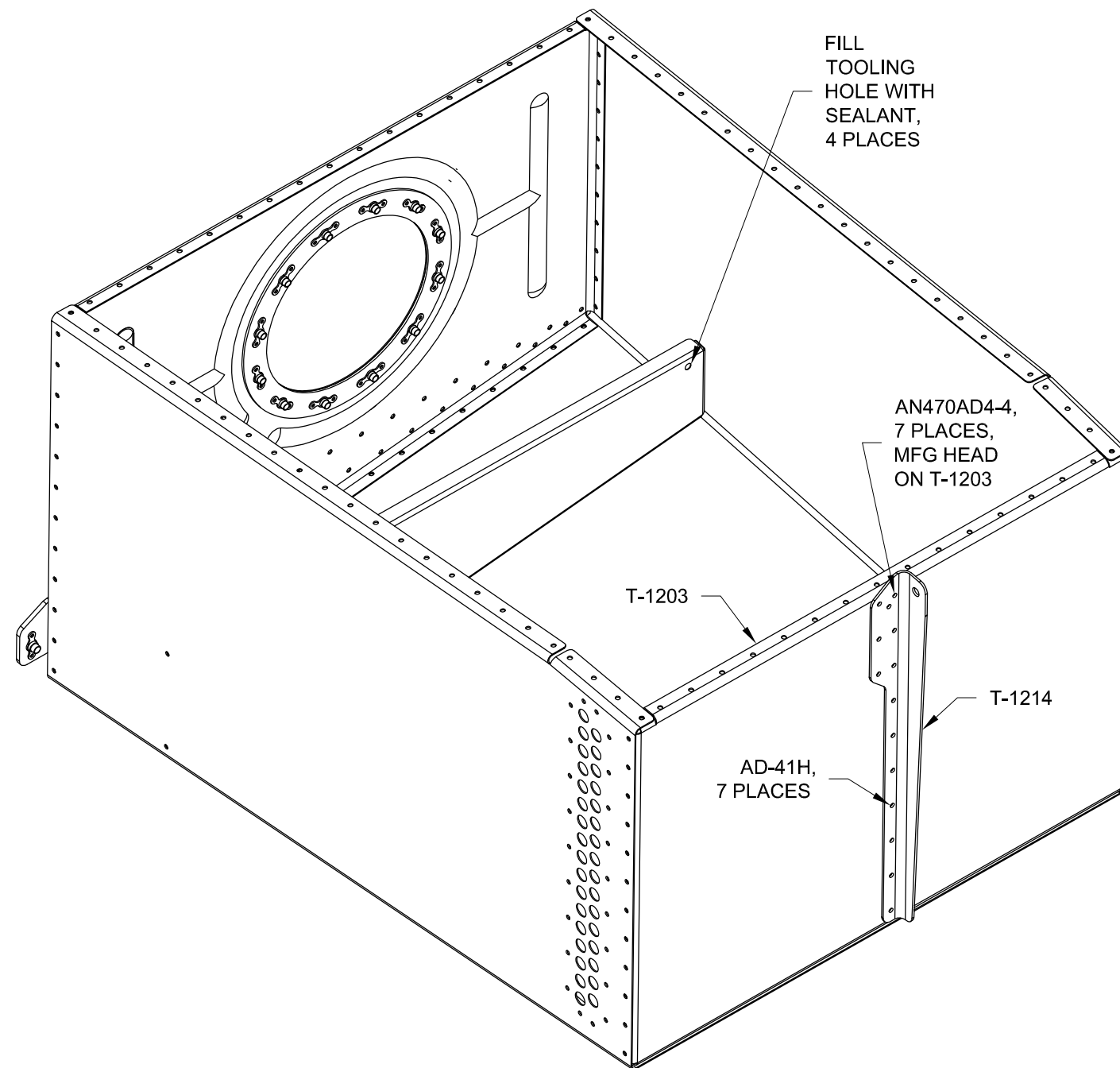


FIGURE 2: INSTALLING THE ATTACH ANGLE