

Step 1: Bolt the F-1231D Roll Bar Bases to the F-1205B-L & -R Roll Bar Attach Plates using the hardware called out in Figure 1.

Step 2: Cleco the Roll Bar Assembly to the forward face of the F-1231D Roll Bar Bases. Cleco the F-1254-L & -R Support Frames to the Roll Bar Assembly and F-1234-L & -R Canopy Decks as shown in Figure 1.

Step 3: Match-Drill #30 the twelve holes in the sides of the Roll Bar Assembly into the F-1231D Roll Bar Bases.

Step 4: Remove, deburr, prime and reinstall the F-1231D Roll Bar Bases to the F-1205B-L & -R Roll Bar Attach Plates.

Step 5: Rivet the Roll Bar Assembly to the F-1231D Roll Bar Bases per the callouts in Figure 1.

Step 6: Separate the F-1207C Baggage Bulkhead into left and right parts as shown in Figure 2.

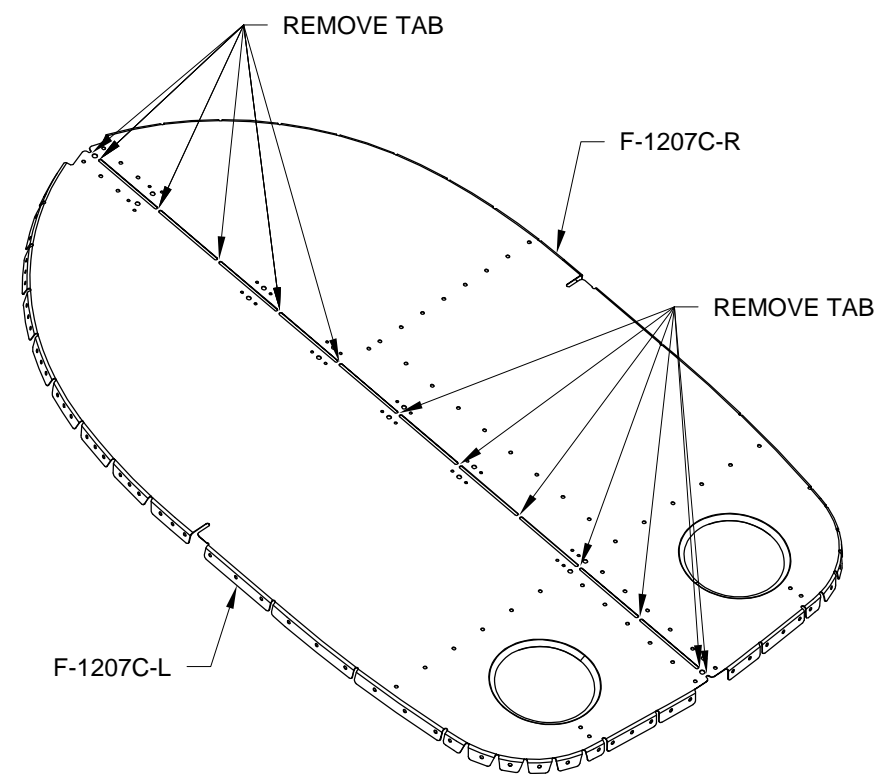


FIGURE 2: SEPARATING F-1207C

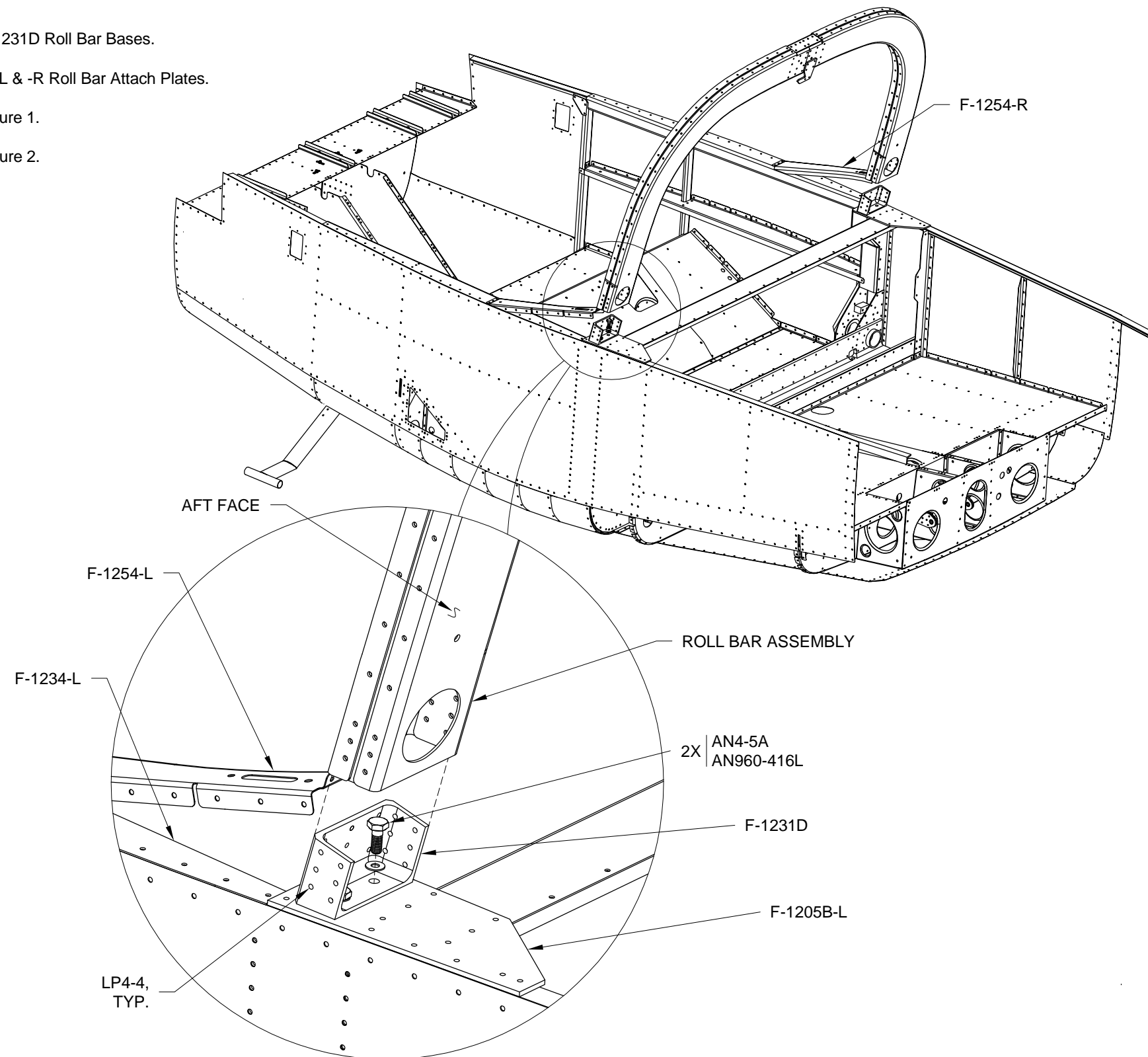


FIGURE 1: INSTALLING THE ROLL BAR ASSEMBLY