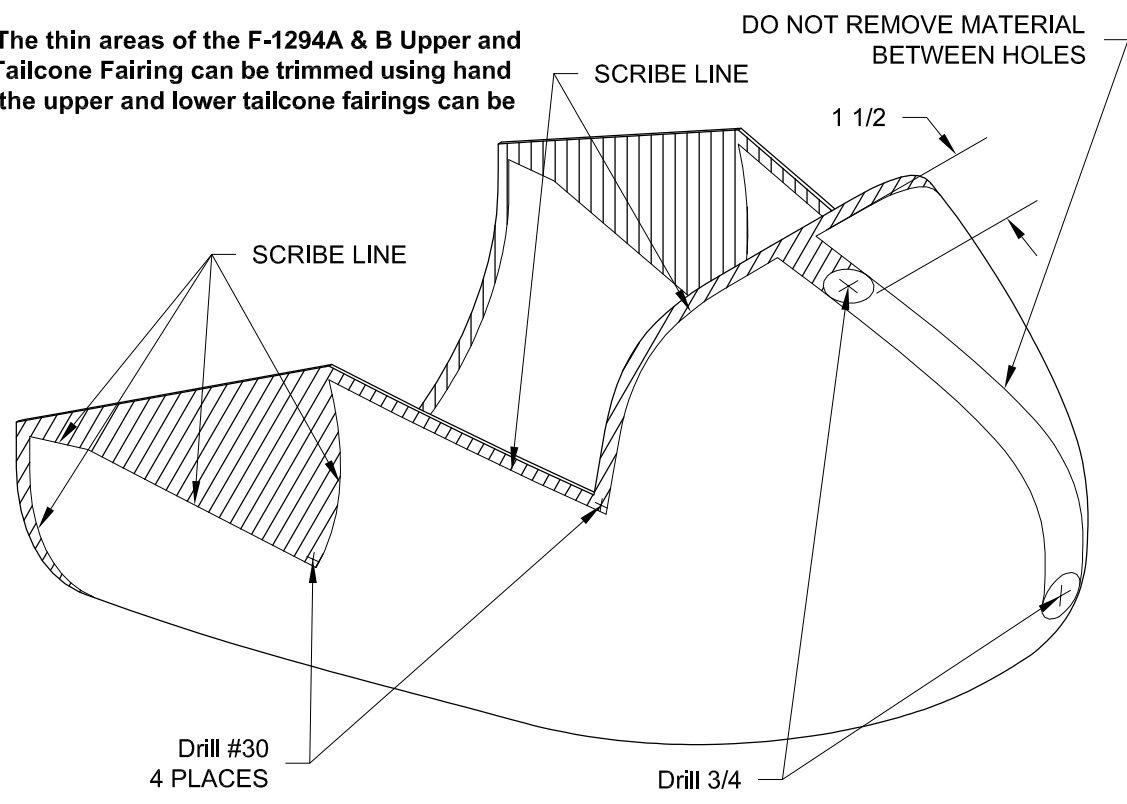


**NOTE:** The thin areas of the F-1294A & B Upper and Lower Tailcone Fairing can be trimmed using hand shears. The thicker areas of the upper and lower tailcone fairings can be trimmed using a hacksaw.

**Step 1:** Drill two holes with a step drill bit in the F-1294B Lower Tailcone Fairing as shown in Figure 1. Drill two holes in each side of the lower tailcone fairing at the locations shown in Figure 1. Place the perimeter of all of the holes within the scribe line.

**Step 2:** Trim the excess material from the F-1294B Lower Tailcone Fairing as shown in Figure 1. Cut close to the scribe line, then use a sanding block to finish the edge to the scribe line.

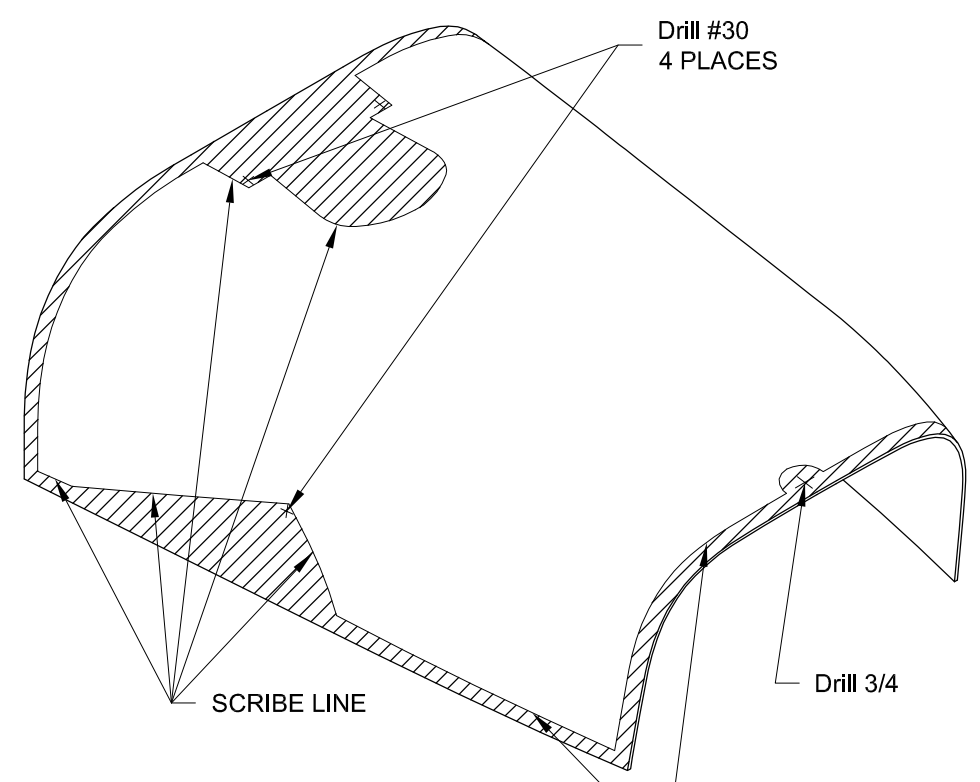
Do not cut away the material between the two 3/4 inch holes drilled in Step 1.



**FIGURE 1:  
TRIMMING THE F-1294B**

**Step 3:** Drill a hole using a step drill bit in the F-1294A Upper Tailcone Fairing as shown in Figure 2. Drill two holes in each side of the upper tailcone fairing at the locations shown in Figure 2. Place the perimeter of the hole as close to the scribe line as possible.

**Step 4:** Trim excess material from the F-1294A Upper Tailcone Fairing as shown in Figure 2. Cut close to the scribe line, then use a sanding block to finish the edge to the scribe line.

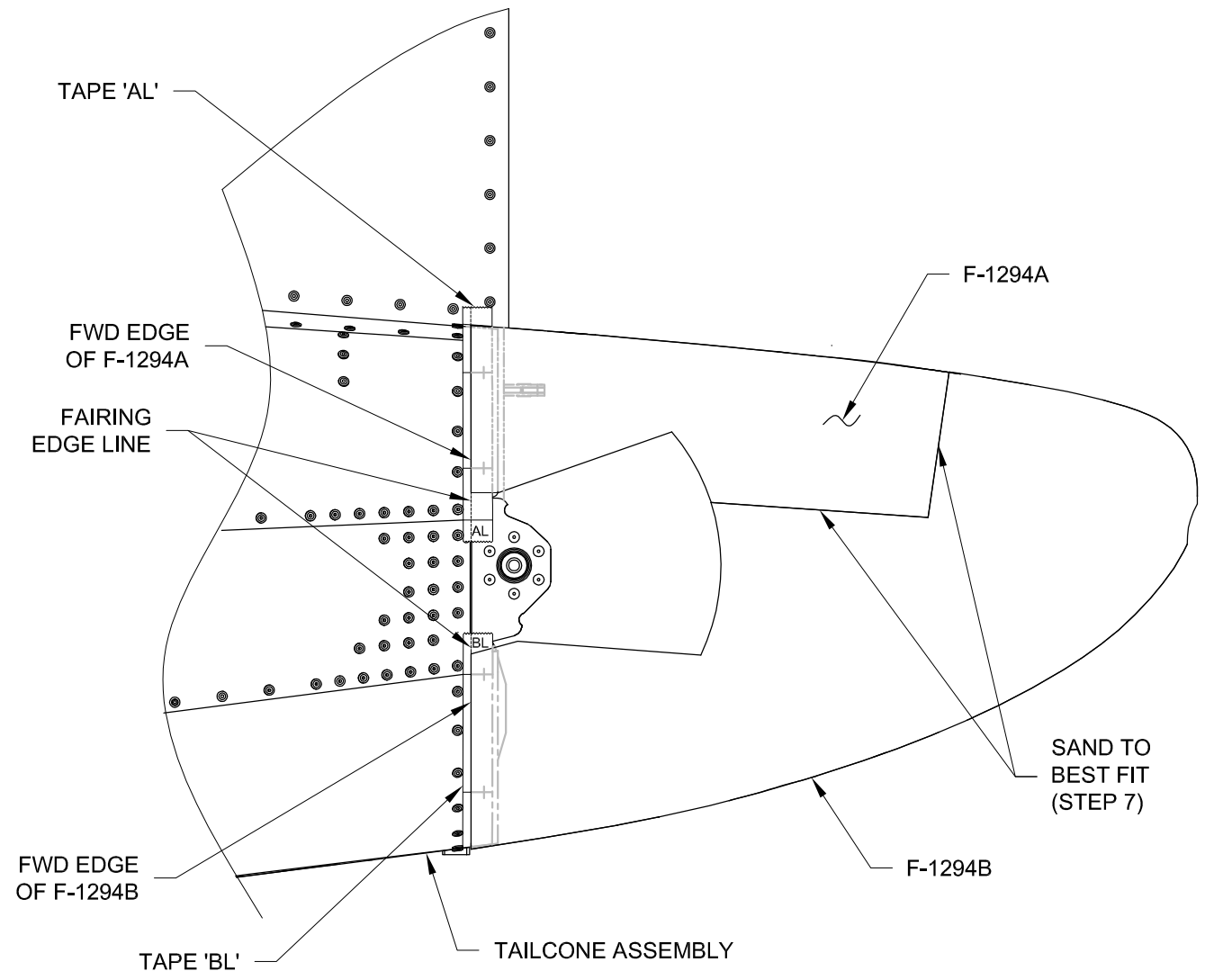


**FIGURE 2:  
TRIMMING THE F-1294A**

**Step 5:** Align the forward edge of the F-1294B Lower Tailcone Fairing to the fairing edge line (Ref Page 12-05, Figure 2) on tape 'BL' and 'BR' as shown in Figure 3. Temporarily tape or clamp the lower tailcone fairing to the tailcone.

**Step 6:** Align the forward edge of the F-1294A Upper Tailcone Fairing to the fairing edge line on tape 'AL' and 'AR'. Align the notch from the 3/4 inch hole in the upper tailcone fairing with the 3/4 inch slot in the F-1294B Lower Tailcone Fairing.

**Step 7:** Sand the called out edges of the F-1294A & B Upper and Lower Tailcone Fairings for best fit, with minimal gap, see Figure 3. The best fit edges will be finished in a following step.



**FIGURE 3:  
FAIRING FIT**